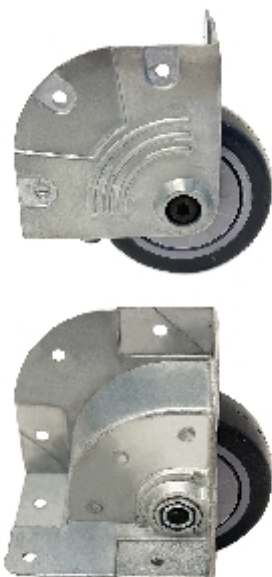



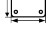
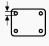
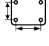




Fixed castor:

118a 820 799



## Technical data

Diameter		76 mm
Tread width		25 mm
Height		104,4 mm
Top plate dimensions		81,4 x 65,3 mm
Top plate hole diameter		5,2 mm
Dist. between holes		34 x 50 + 40,71 x 40,71 mm
Load capacity		50 kg
Weight		430 g

## Technical description

case corner castor with die cast aluminium body.



## Wheel

TPR wheel (Shore A 80)