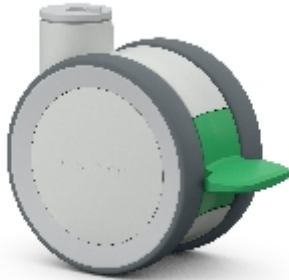








Swivel castor with directional lock:

305378 (TWIST)



## Technical data

Diameter		125 mm
Tread width		2x20 (81) mm
Height		143 mm
Bolt hole diameter		10 mm
Brake swivel radius		133 mm
Load capacity		125 kg

## Technical description

TWIST plastic twin wheel castor

fork is made of glass fiber-reinforced polyamide

maintenance-free construction

Fittings: 10 und 12 mm bolt hole and top plate

on request also available with other wheel variants and lower overall height



## Wheel

polyurethane tyre (Shore A 95)

glass fiber-reinforced polyamide wheel centre

ball bearing